

NEW Fuji Electric IP54 Flush Mounting Handle

Features

- Flush mounting design reduces risk of unintended operation and damage
- Breaker mounted type (N-type) external operation handle with waterproof structure (IP54)
- Lineup available up to 250AF
- Conforms to worldwide standards UL/CSA, CCC, TUV, IEC, JIS, EN/CE Marking

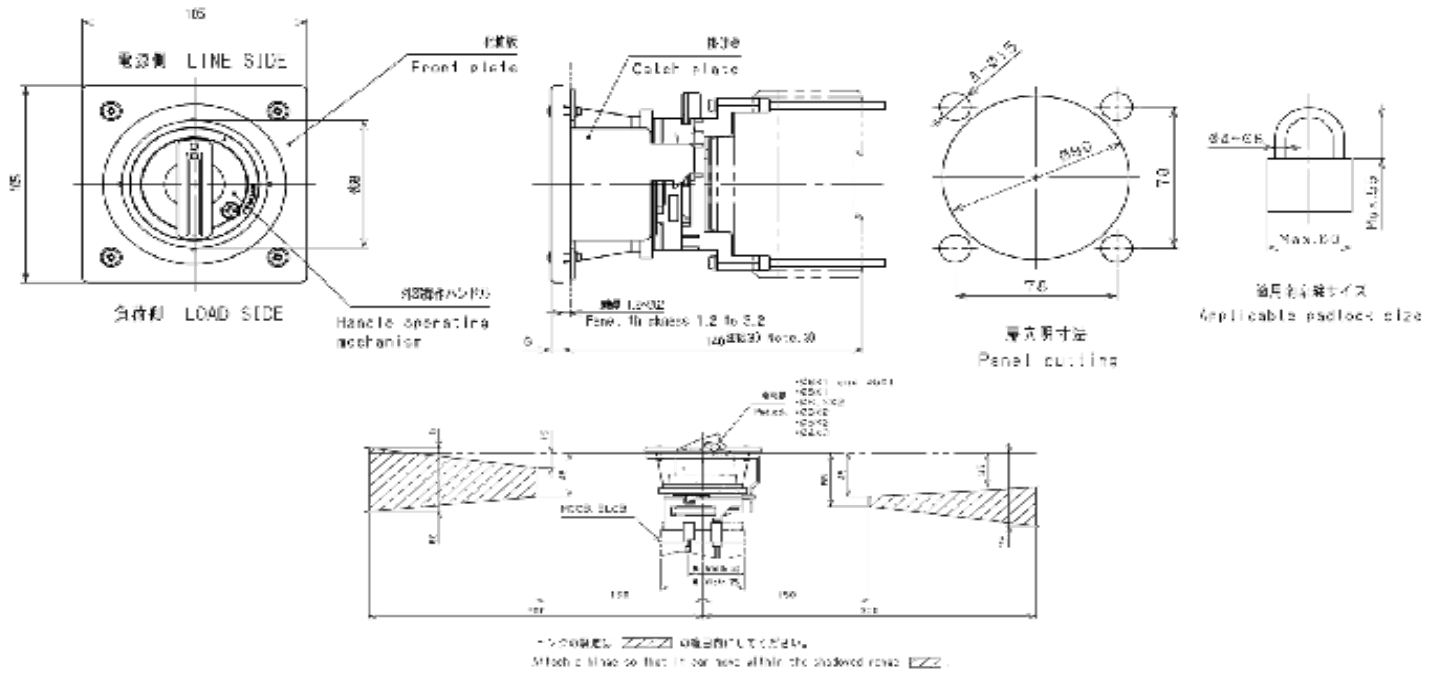


Ordering Information

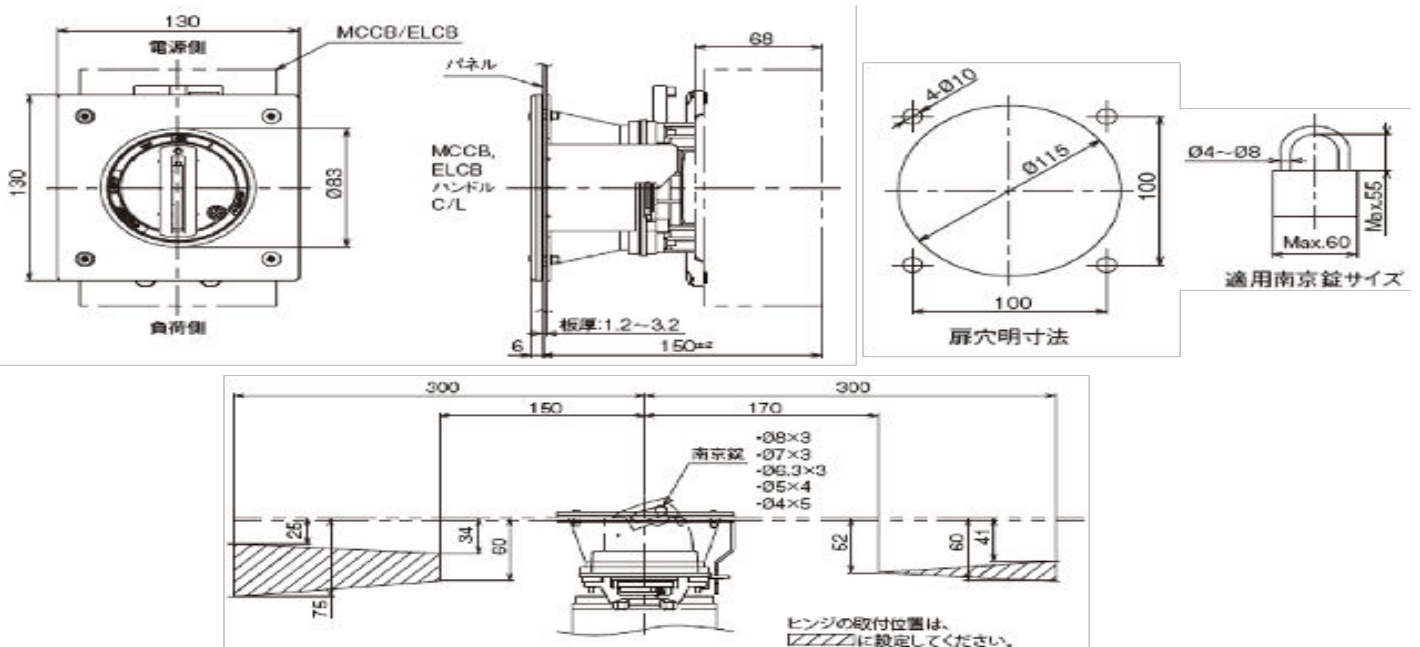
Part Number	Specification	Applicable Breaker Type	
		MCCB	ELCB
BW9N0AC-F -0B795	Flush mounting	BW50RAGU-2P,3P	EW50RAGU-3P
		BW100EAGU-2P,3P	EW100EAGU-2P,3P
BW9N0CC-F -0B795	Flush mounting	BW125JAGU-2P,3P	EW125JAGU-3P
		BW125RAGU-2P,3P	EW125RAGU-3P
BW9N0GC-F -0B795	Flush mounting	BW250EAGU-2P,3P	EW250EAGU-3P
		BW250JAGU-2P,3P	EW250JAGU-3P
		BW250RAGU-2P,3P	EW250RAGU-3P

Reference Dimensions

50/100AF



125/250AF



Fuji Electric Corp. of America
47520 Westinghouse Drive
Fremont, CA 94539
Tech Support: (510) 403-7865