

Ring Compressors and Blowers



Genuine Fuji Electric Ring Compressors
for VFC, VFZ, and VFB Series

December 2023

 **Fuji Electric**

Specifications

Ring Compressors

Product Model	Max. Pressure in. H ₂ O	Max. Vacuum in. H ₂ O	Max. Flow: SCFM	HP	Voltage	Phase	Weight: lbs. (kg)
VFC080P-5T	19.5	18.7	19.5	0.10	115/230	1	13.3 (6.0)
VFC080A-2T	19.5	18.7	19.5	0.10	230	3	13.3 (6.0)
VFC080A-4W	19.5	18.7	19.5	0.10	460	3	13.3 (6.0)
VFC100A-7W	26.5	25	27	0.17	230/460	3	19 (8.6)
VFC100P-5T	27.5	26	27	0.17	115/230	1	19 (8.6)
VFC200A-7W	37	34	42	0.33	230/460	3	22 (10)
VFC200P-5T	34	33	42	0.33	115/230	1	22 (10)
VFC300A-5W	50	45	55	0.50	575	3	25.5 (11.5)
VFC300A-7W	50	45	55	0.50	230/460	3	25.5 (11.5)
VFC300P-5T	50	45	56	0.50	115/230	1	27 (12.3)
VFC400P-5T	54.5	50	98	1.00	115/230	1	51 (23)
VFZ401A-5W	60	53	89	1.3	575	3	46 (20.1)
VFZ401A-7W	60	53	89	1.3	230/460	3	46 (20.1)
VFB175P-5T	72	65	106	1.75	115/230	1	40 (18.1)
VFB175A-7W	72	65	106	1.75	230/460	3	40 (18.1)
VFC508P-2T	80	70	154	2.50	200/230	1	97.5 (44)
VFZ501A-5W	80	83	135	2.70	575	3	77 (35)
VFZ501A-7W	80	83	135	2.70	230/460	3	77 (35)
VFZ601A-5W	134	95	173	5.00	575	3	108 (49)
VFZ601A-7W	134	95	173	5.00	230/460	3	108 (49)
VFZ701A-5W	130	99	250	6.70	575	3	134 (60.8)
VFZ701A-7W	130	99	250	6.70	230/460	3	134 (60.8)
VFZ801A-5W	135	112	379	11	575	3	211 (95.7)
VFZ801A-7W	135	112	379	11	230/460	3	211 (95.7)
VFZ901A-5W	139	110	574	14.70	575	3	259 (117.5)
VFZ901A-7W	139	110	574	14.70	230/460	3	259 (117.5)
VFB2000-7W	204	141	755	20.00	230/460	3	315 (143)
VFB3000-7W	168	145	791	30	230/460	3	350(159)
2VFB30-1.2-5T	100	100	57	1.20	115/230	1	36 (16.6)
2VFB30-1.2-7W	125	110	56	1.20	230/460	3	36 (16.6)
2VFB40-3.42-7W	172	140	106	3.42	230/460	3	64 (29)
2VFB50-6.16-7W	189	165	158	6.16	230/460	3	106 (48.2)
2VFB60-8.4-5W	200	177	222	8.40	575	3	170 (77.3)
2VFB60-8.4-7W	200	177	222	8.40	230/460	3	170 (77.3)
2VFB60-11.5-7W	245	185	222	11.50	230/460	3	177 (80.5)
VFD2-L	84	72	54	0.88	230	3	33 (15)
VFD2-H	84	72	54	0.88	460	3	33 (15)
VFD2S	84	72	54	1.00	115	1	33 (15)
VFD41-L	72	76	120	2.20	230	3	48 (21.8)
VFD41-H	72	76	120	2.20	460	3	48 (21.8)
VFD41S	96	96	120	2.20	230	1	46 (20.9)
VFD42-L	100	104	120	2.60	230	3	51 (23.2)
VFD42-H	100	104	120	2.60	460	3	51 (23.2)
VFD4-L	145	112	120	3.50	230	3	60 (27.3)
VFD4-H	145	112	120	3.50	460	3	60 (27.3)
VFD5-L	137	120	148	4.00	230	3	78 (35.5)
VFD5-H	137	120	148	4.00	460	3	78 (35.5)
VFD6-L	90	85	198	4.80	230	3	77 (35)
VFD6-H	90	85	198	4.80	460	3	77 (35)

Applications



Pneumatic Conveying

Fuji Electric Ring Compressors are the “engines” for these critical pneumatic tube systems for the medical industry.



Wastewater Treatment

Fuji Electric Blowers provide clean, dry air for aeration in wastewater treatment systems.



Aquaculture

Fuji Electric blowers provide aeration for shrimp and fish farming applications.



Concrete Aeration

Fuji Electric blowers provide aeration for dry concrete batch plants.



Air Monitoring

Fuji Electric blowers are used in both pressure and vacuum systems to monitor air quality.

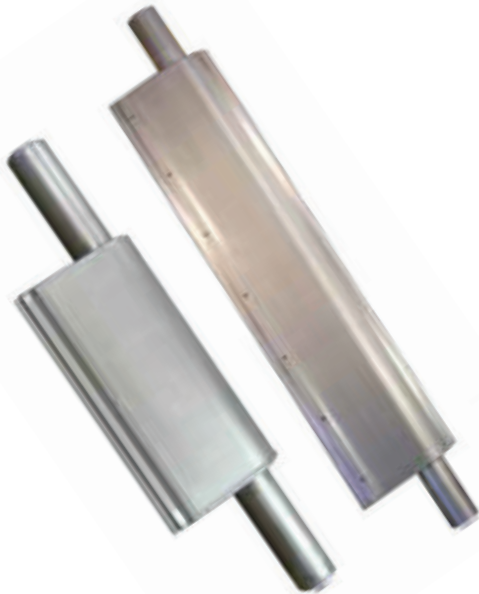
Turbo Blowers

Product Model	Max. Pressure in. H ₂ O	Max. Flow: CFM	HP	Voltage	Phase	Weight: lbs. (kg)
FDC-005P-5T	5.6	220	0.5	115/230	1	32.9
FDC-005A-7W	5.6	254	0.5	230/460	3	32.9
FDC-010P-5T	8.8	478	1	115/230	1	48.9
FDC-010A-7W	8.9	562	1	230/460	3	46.3
FDC-020P-2T	12.6	594	2	230	1	70.6
FDC-020A-7W	13	594	2	230/460	3	73.4
FDC-030A-7W	15	1111	3	230/460	3	79.2
FDC-050A-7W	18.5	1860	5	230/460	3	136.9
FDC-075A-7W	22.5	1870	7.5	230/460	3	180
FDC-100A-7W	28.5	1870	10	230/460	3	253
FDC-150A-7W	30	4240	15	230/460	3	319
FDC-200A-7W	30	5850	20	230/460	3	341

Additional Products

Accessories

Fuji Electric provides a wide variety of Blower accessories to complete your installation. Accessories include Pressure and Vacuum Relief Valves, Inlet and Vacuum Filters, Aspirators, Silencers and Vacuum Boosters.



Air Knives

Fuji Electric provides engineered air knives and air knife systems. We can provide individual components or turn-key systems.

Systems

Fuji Electric provides engineered systems incorporating Fuji Electric Ring Compressors. Engineered Designs include Industrial Vacuum Systems, Engine-Driven Blower Systems for remote operations and Aspirator Systems.

